

PLAN SCALE 1"=40'

SHEET NO 1
 PLAN NO 1862
 FOR
TWENTY-FIFTH STREET SEWER
 BETWEEN
 SEPULVEDA AVENUE AND LE ROY STREET
 IN THE
 CITY OF SAN BERNARDINO
 CALIFORNIA

JULY, 1949

R.D. FORSYTHE
ACTING CITY ENGINEER

PLAN ADOPTED Sept. 6, 1949



NOTE:
 All Vitrified Pipe Connecting Sewers shall be constructed on an upward grade of two per cent from the Main Sewer and shall extend from the Main Sewer to the Curb Line.

PROFILE LEGEND
 Approximate Present Surface of Ground shown by Black Line thus
 Flow Line of Sewer to be constructed shown by Red Line thus

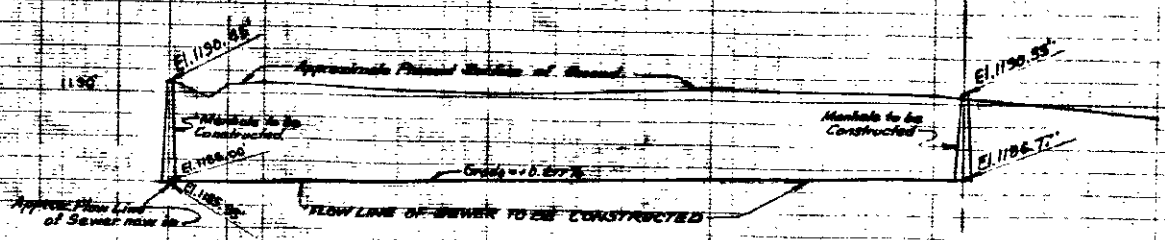
LEGEND
 1" in. means Inch or Inches
 1' means Foot or Feet
 N# means number
 El. means Elevation
 6" Vitrified Pipe to be constructed shown thus
 8" Vitrified Pipe to be constructed shown thus
 Manholes to be constructed shown thus
 8" Vitrified Pipe Sewer now in shown thus

SEWER DETAIL
 Length of 8" Vitrified Pipe Sewer to be constructed
 Length of 6" Vitrified Pipe Sewer to be constructed
 No. of 6" Vitrified Pipe Sewers to be constructed
 No. of Manholes to be constructed

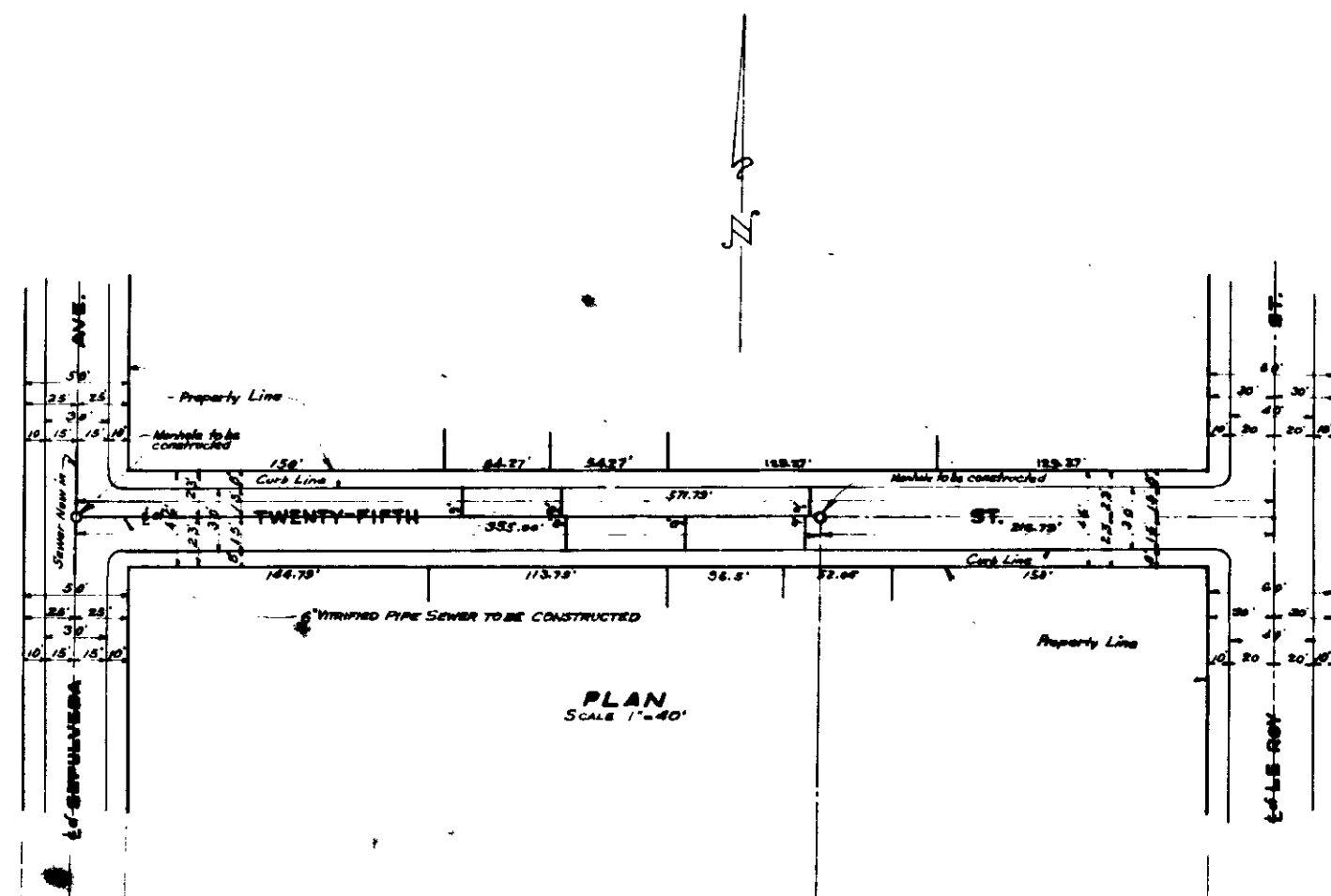
TITLE TO STREET
 Title of the City of San Bernardino to TWENTY-FIFTH STREET was given by Deed, recorded in Book 434 Official Records of Page 270 of Records, of San Bernardino County, California.

GRADE ORDINANCE
 Grade of TWENTY-FIFTH STREET was established by Resolution No 1570 of the City of San Bernardino, California. Adopted July 5, 1948.

DATUM
 All Elevations shown in Red Ink are in feet and inches above a plane which is 1045.25 feet below the City Bench Mark as established by Ordinance 383 of the City of San Bernardino, California.



PROFILE SCALE (Horizontal) 1"=40' (Vertical) 1"=4'



PLAN
SCALE 1"=40'

SHEET NO 1
 PLAN NO 1862
 FOR
TWENTY-FIFTH STREET SEWER
 BETWEEN
 SEPULVEDA AVENUE AND LE ROY STREET
 IN THE
 CITY OF SAN BERNARDINO
 CALIFORNIA

JULY, 1949

R.D. FORSYTHE
ACTING CITY ENGINEER

PLAN ADOPTED Sept. 6, 1949



NOTE:
 All Vitrified Pipe Connecting Sewers shall be constructed on an upward grade of two per cent from the Main Sewer and shall extend from the Main Sewer to the Curb Line.

PROFILE LEGEND
 Approximate Present Surface of Ground shown by Black Line thus
 Flow Line of Sewer to be constructed shown by Red Line thus

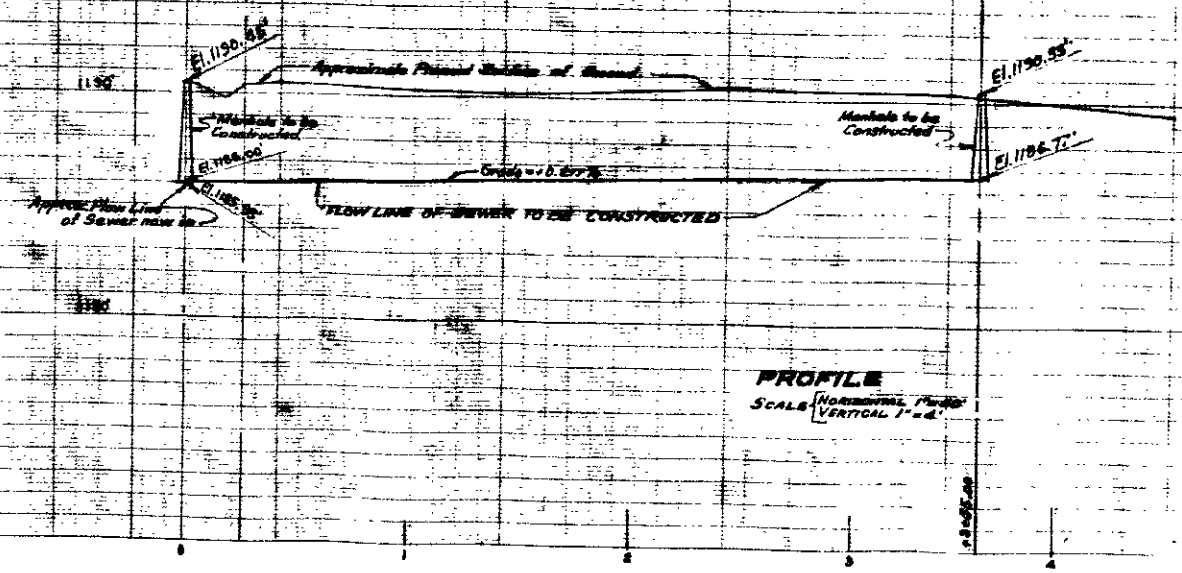
LEGEND
 18" means 18 inch Vitrified Pipe Sewer to be constructed shown thus
 12" means 12 inch Vitrified Pipe Sewer to be constructed shown thus
 8" means 8 inch Vitrified Pipe Sewer to be constructed shown thus
 6" means 6 inch Vitrified Pipe Sewer to be constructed shown thus
 M means Manhole to be constructed shown thus
 C means Curb Line
 St. means Street
 Ave. means Avenue

SEWER DETAIL
 Lineal ft. of 18" Vitrified Pipe Sewer to be constructed 355.00
 Lineal ft. of 12" Vitrified Pipe Sewer to be constructed 58.00
 Lineal ft. of 8" Vitrified Pipe Sewer to be constructed 15.00
 Lineal ft. of 6" Vitrified Pipe Sewer to be constructed 15.00
 No. of Manholes to be constructed 6

TITLE TO STREET
 Title of the City of San Bernardino to TWENTY-FIFTH STREET was given by Deed, recorded in Book 434 Official Records of Page 270 of Records, of San Bernardino County, California.

GRADE ORDINANCE
 Grade of TWENTY-FIFTH STREET was established by Resolution No 1510 of the City of San Bernardino, California. Adopted July 5, 1948.

DATUM
 All Elevations shown in Red Ink are in feet and inches above a plane which is 1045.25 feet below the City Bench Mark as established by Ordinance 383 of the City of San Bernardino, California.



PROFILE
SCALE (Horizontal 1"=40' Vertical 1"=4')